

Norman Beckett Lineages and Clusters

Version of 21 March 2026

Are you a Beckett or similar? Maybe a Becket, or an a'Becket? Are you of Norman origins, in a lineage that dates back to the time of William the Conqueror, who conquered England in 1066?

If you are, or think you might be, this is for you. Much work has been done to determine how these Norman lineages originated and spread especially in England in the period after 1066. This work is based on historical research, on the collection and analysis of existing lineages, and on Y-DNA research. You should hopefully be able to determine if and how your lineage fits into these overall historical developments.

This might not be for you if you have another origin for your surname, or if there are no living direct-line male descendants in your lineage to determine where your lineage fits historically and genetically. The main alternative origin for people with the Beckett and similar surnames is an Ayrshire tree with dozens of branches with a single genetic origin around 1200, which has no Norman connections. There are a number of other types of surname origins we have identified, including slavery, adoption, illegitimacy, and surname changes after emigration to a new country. These are explained in more detail in a separate paper.¹

Into the early 2020s, anyone interested in the origins of their lineage with the Beckett surname was almost always limited to what little they could find in historical records, and then largely unfounded theories found in reference books, such as possibly describing someone with a small beak-like mouth or a prominent nose. However, recent work, including comprehensive research and Y-DNA testing, has started to create a full picture of the many different ways that the Beckett surname has originated.

Work on the 'English' Becketts has largely been driven by Jack Ernest (Erny) Beckett. For years Erny has been working on creating a comprehensive collection of all available Beckett (and similar) lineages, combining and correcting them as much as possible. In the process he has observed the high levels of clustering of different lineages in some areas, which strongly suggest that many of these lineages are connected, but the historical records to understand those connections are lacking.

A powerful tool to determine those connections has only become meaningfully available in the past few years. This is Y-DNA testing which can demonstrate definitively where relationships between surname lineages do – and do not – exist, including within historical timeframes (say since 1000 down to the present day) and also back thousands of years before that.

This current analysis work builds on Erny's huge database of Beckett (etc) lineages to identify clusters in a quantitative way. The objective is to establish which existing lineages are most likely to represent major genetic branches of Norman Becketts which would have been established at the time of William the Conqueror. These can then be prioritized for Y-DNA testing to try to confirm when they were established and whether they are independent of other branches. Any other lineages which then wish to test will be able to clarify whether and where they tie into one of these more major branches, or if they are truly separate lineages, and therefore separate genetic branches.

This status report addresses the following:

1. How you can find answers about your own Beckett lineage	2
2. Summary findings about Norman Beckett lineages and clusters	3
Annex 1: Norman Beckett genetic branches	7
Annex 2: Norman Beckett cluster analysis summary results - spreadsheet.....	8
Annex 3: Steps in analyzing Norman Beckett lineages and clusters	9
Annex 4: Location values used for analysis of birth locations	10
Annex 5: Surnames in study.....	12
Annex 6: Lineages in study.....	12
Change log	13
References	13

This document has been produced for the Becket(t)/Bicket(t)/Bichan one-name study at <https://bicket.one-name.blog>. Feedback will be appreciated. Please write to bicket@one-name.org. There is another document on that website explaining the origin of the Norman Beckett surname.ⁱⁱ

1. How you can find answers about your own Beckett lineage

If you want to find out whether and how your own Beckett lineage fits into the bigger picture of Norman Becketts, then Y-DNA testing will likely be needed, unless you can be connected in historical records to a branch which has already been Y-DNA tested. Every Beckett who tests will almost certainly find the results interesting, and they will definitely help the project. Nonetheless, some Norman Beckett branches are more important for the project at this stage. On a case-by-case basis we will consider providing financial support (up to 100%) for testers who are likely to help advance the project in significant ways. The analysis in section 2 explains our current priorities.

If you want to find out whether and how your own Beckett lineage fits into the bigger picture of Norman Becketts, we suggest that you consider the following:

- Determine which Norman branch you are in. There are various ways of doing this. The simplest is by writing to bicket@one-name.org explaining who you are. We will try to place you. (It is also possible to use our various indexes which are linked from our website <https://bicket.one-name.blog>.ⁱⁱⁱ)
- Determine if your branch has already been Y-DNA tested. Annex 1 identifies the branches that have already been tested as of the writing of this document. But it is still worth checking by writing to bicket@one-name.org.
- Consider whether you – or a male direct-line descendant in your branch – might be willing to do a Y-DNA test. The test itself is simple. The only real issue is whether you are willing to have your DNA analyzed. Dozens of people have already tested for our project, but some have not been willing. We can discuss any questions or concerns you

have about this.

- Contact us (bicket@one-name.org) about whether we can provide financial support for your testing.
- If you wish to proceed on your own, without financial support, do the following:
 - o Order a Y-DNA testing kit from Family Tree DNA (familytreedna.com) based in Houston, Texas. You can take a less expensive Y-37 test, which is usually good enough to say *whether* you are related to another tester, but not *how* you are related. You can later upgrade your sample to the Big Y 700 test – or simply purchase it in the first place - to have the results which definitively place you on the evolutionary tree of mankind down to the present day.
 - o Once you have ordered your kit, please join the Bicket project from your kit account.
- Consider whether you can provide financial support for other people wanting to take a Y-DNA test, but who cannot afford it themselves. We can explain how to do this.

2. Summary findings about Norman Beckett lineages and clusters

We performed an analysis on a comprehensive database of those individuals in different Beckett (etc) lineages which have been collected and consolidated by Jack Ernest ('Erny') Beckett. The date of the download was 4 March 2026. (Updates continue to be made, so future reworkings of this analysis will reflect such updates.) The details of how we performed that work are described in Annex 3.

Figure 1 on the next page shows the results of this analysis graphically using a map. (For comparison, a map of all of the counties in England as of 1974 is given in Annex 4 – 'Location values used for analysis of birth locations'.) The comments below discuss the analysis results. The summary numerical analysis results are given in Annex 2 – 'Norman Beckett cluster analysis summary results – spreadsheet'. A more detailed spreadsheet – Detailed analysis by cluster location in England against lineage' – as well as the full supporting spreadsheet with pivot tables are available on the one-name study website. ^{iv}

Norman Beckett Cluster Analysis Results

Based on data download of 4 March 2026

- A. Counties with largest lineages
 - 1. Norfolk*
 - 2. Buckinghamshire
- B. Counties with multiple significant lineages, possibly inter-related
 - 3. Yorkshire
 - 4. Staffordshire
 - 5. Cheshire*
- C. Counties with significant mixtures of different lineages within or with other counties
 - 6. Suffolk
 - 7. Nottinghamshire
 - 8. Lancashire
 - 9. Shropshire
- D. Counties with highly concentrated single branches
 - 10. Wiltshire
 - 11. Berkshire
 - 12. Cambridgeshire
 - 13. Cornwall
 - 14. Warwickshire
 - 15. Surrey
 - 16. Oxfordshire
- E. Too mixed for meaningful analysis
 - 17. London*

* Direct-line male descendants from these areas have been tested with the Big Y 700 test. One line originating in France has also been tested. There is one further line which has been tested, but without its English origin so far identified. See also Annex 1.

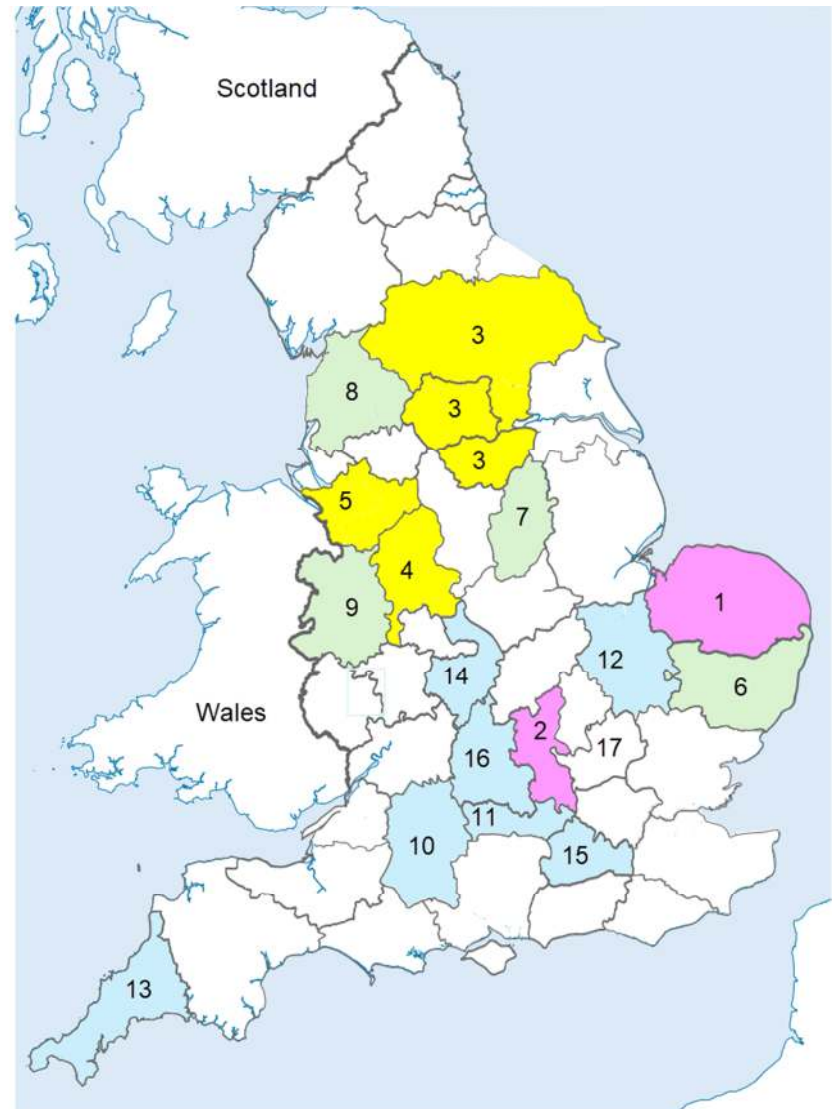


Figure 1: Norman Beckett Cluster Analysis Results

The geographical clusters identified by this analysis are as follows:

A. Largest lineages: highest priority for testing

- a. Norfolk. Lineage NFK1GM has the largest concentration of births in a single county by far – 976. It also has significant births in Suffolk (267) and London (225), both nearby. Based purely on this quantitative analysis, this lineage probably represents an original Beckett lineage from the time of William the Conqueror, and there should be many direct-line male descendants who can test. We already have one such tester, and should try to get others to confirm the genetic signature of the branch.
- b. Buckinghamshire. Lineage ‘Buck’ has the second-largest concentration of births in a single county – 551, and also has significant births in London (175) which lies directly to its east. This lineage may represent an original Beckett lineage.

B. Counties with significant lineages which might be related: next priority for testing

- a. Yorkshire. There are six different lineages for which the main concentration of births is in Yorkshire. These may be related, which could be confirmed or disproven by Y-DNA testing. These lineages, in priority order for testing, are:
 - i. ON2 (387)
 - ii. Yorkshire (202)
 - iii. AUS101 (192)
 - iv. Sheff (133)
 - v. WORS (120)
 - vi. ED (103)
- b. Staffordshire. There are four different lineages for which the main concentration of births is in Staffordshire. These lineages, in priority order for testing, are:
 - i. West (308)
 - ii. Bagot (156)
 - iii. Oldham (109)
 - iv. Audley (108)
- c. Cheshire. There are five different lineages for which the main concentration of births is in Cheshire, and two further lineages with significant numbers but for which the main concentration is elsewhere. The five lineages for which the main concentration of births is in Cheshire are:
 - i. Tarvin (286)
 - ii. Hamilton (199)*
 - iii. Newton Quaker (168)
 - iv. Astbury (120)
 - v. Runcorn (119)

The two lineages for which the main concentration of births is elsewhere are:

- i. Yorkshire (108). The main concentration is in Yorkshire
- ii. NM2GM (100). The main concentration is in Nottinghamshire.

* We already have a tester for the ‘Hamilton’ branch, as well as the ‘Baltimore’ branch with their Most Recent Common Ancestor (MRCA) estimated by Family Tree DNA to have been born around 1300.

- C. Counties with significant mixtures of different lineages within or with other counties.
- a. Suffolk. The largest lineage here is NFK1GM (267), the Norfolk lineage. but it is also the main location for lineage Nant (208).
 - b. Nottinghamshire. NM2GM has its greatest concentration here (256), but it also has significant concentrations in Cheshire and London. This deserves more detailed review before deciding on testing priority.
 - c. Lancashire. The largest concentrations of three different lineages are found here. They are:
 - i. Blackburn (230)
 - ii. Lanc5GM (212)
 - iii. CHS259 (103)
 - d. Shropshire. Oldham has its greatest concentration here (151), but it also has a significant concentration in Staffordshire. (They are close to each other).
- D. Counties with highly concentrated single branches. These show little geographical mixing of other branches into these counties, or of their main branches into other counties. These are probably lower priority for testing, as they are likely to represent small offshoots of more major branches.
- a. Wiltshire. SF (284)
 - b. Berkshire. Wantage (131)
 - c. Cambridgeshire. Ely2 (118)
 - d. Cornwall. Eddy (117)
 - e. Warwickshire. a'Beckett (115)
 - f. Surrey. Kent (115)
 - g. Oxfordshire. NZ31 (105)
- E. London. There are no branches for which the main concentration is in London. In any case, London would have been a melting pot for people from all parts of the country, so would not be a likely location for individual branches to be identified by analytical review.

We already have two Y-DNA testers from completely separate legs of a London branch. Their Most Recent Common Ancestor (MRCA) has been estimated by Family Tree DNA to have been born around 1050, exactly at the time of William the Conqueror.

We already have Y-DNA testers for two further branches. One is from a French branch, going back to Oise, which is next to Normandy. The other is from a US branch of uncertain geographical origin. We will be able to determine its origin when we find a tester in the same genetic branch whose geographical origin is known.

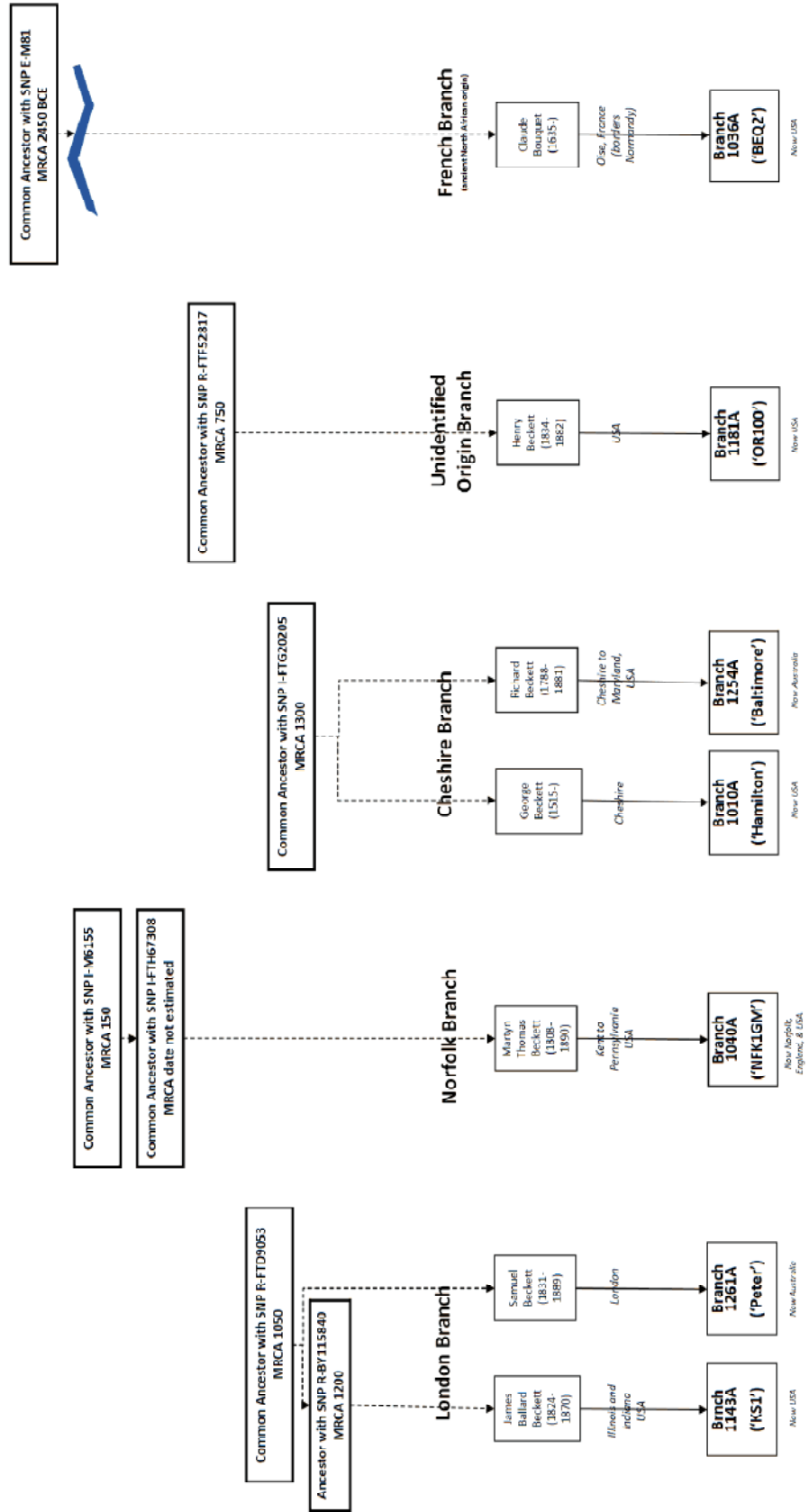
Annex 1: Norman Beckett genetic branches

Norman Beckett Genetic Branches

version of 21 March 2026

These are considered to be Norman Beckett branches, all genetically independent within historical timeframes, because of the Beckett/Becket/Beket surname denoting someone associated with the location of the Abbey du Bec in Normandy, France at the time of William the Conqueror. **This chart will be extended as more branches test.**

MRCA = Most Recent Common Ancestor, date as estimated by Family Tree DNA for the cited genetic mutation.



Annex 2: Norman Beckett cluster analysis summary results - spreadsheet

Area/Lineage	NFK1GM	Buck	ON2	West	Tar/n	NM2GM	Blackburn	Oldham	Astbury	Audley	AUS101	Bagot	CHS259	ED	Essex	Hamilton	Lanc5GM	Nant	Newton Quaker	Runcom	Sheff	WORS	Yorkshire	SF	Wantage	Ely2	Eddy	ABeckett	Kent	NZ31	Grand Total (including hidden)
England - Norfolk	976	1	3	18	5			1	1						1	1								1	2		9	1		1244	
England - Buckinghamshire	8	551	1													1		1							2		2		8	597	
England - Yorkshire	32	9	387	5	1	7	34				192	13		103		2	1	2		1	133	120	202		10			1		1918	
England - Staffordshire	12	9		308	9	26	109	3	108			156				2		25	15				1				2		1	1106	
England - Cheshire	15	6	1	286	100	23	34	120	20				8	7	199	2	81	168	118	1			108				1			1548	
England - Suffolk	267	1		2								1				2	208								3					521	
England - Nottinghamshire	18	18			3	256					1			1								2	3						2	409	
England - Lancashire	1	19	18	3	37	96	230	75	39	36	2	2	103	1		57	212	9	44	8	23		12	1		3	8	17		1778	
England - Shropshire					8	6	151		2				1	10		22			1											333	
England - London	225	175	1									5		1	68	7		21			5		11	86		5	1	23	52	2	1275
England - Wiltshire	2	4					12											1						284		1	44			363	
England - Berkshire	9	11				82																		1	12	131	3	1	15	452	
England - Cambridgeshire	16	1									1			3		5		1							118					198	
England - Cornwall	36	1	1					2																		117				158	
England - Warwickshire	27	16		94	1	7	1					28	1								1			14		1	116	1		412	
England - Surrey	56	34				13									6	2		9					1	41				115	14	380	
England - Oxfordshire	3	49	1			29																	5	5					105	327	
Totals (including hidden)	2056	1212	438	441	374	990	320	387	168	167	206	253	122	139	116	331	217	392	240	146	168	132	356	502	151	145	130	229	230	151	15915

Annex 3: Steps in analyzing Norman Beckett lineages and clusters

To try to achieve this study's objectives, the following steps have been followed:

- **Person Database.** Download a copy of the person index using the link given in the Becket(t)/Bicket(t)/Bichan One-Name Study website.^v This is the most comprehensive list of historical Becketts (etc) available anywhere. It is intended to be a comprehensive database of all individuals in Erny Beckett's set of lineages, which themselves are the most comprehensive set of all Beckett (etc) lineages, without any known duplications or significant overlaps.
- **Cluster-Analysis-Birth.** Create a new field to use for analysis of birth clusters, and set the value for each record based on the contents of the BirthLocation field in the Person Database. The analysis locations used are given in Annex 4, together with a discussion of some of the issues addressed in deciding which values to assign.
- **SurnameInStudy.** Create a new field to use to determine which surnames to include from the Person Database, setting it based on a review of the Surname field in the Person Database. For example, spouses of Becketts (etc) would generally not be included, since they may be born away from the location where their Beckett partner originated. Also, some surname lineages which have been tracked by Erny Beckett for possible linkages are to be excluded from the straightforward analysis of Beckett (etc) clusters. A summary of the issues addressed is given in Annex 5.
- **LineageInStudy.** Create a new field to use to exclude lineages from the analysis which are not, or are unlikely to be, Norman Beckett lineages. For example, all lineages from the Ayrshire Bicket(t)/Becket(t)/Bichan tree, plus all lineages for Black Becketts are to be excluded. A summary of the issues addressed is given in Annex 6.
- **Pivot table analysis.** Create pivot tables using the Person Database, excluding surnames and lineages not in the analysis. Analyses are made (1) by Cluster-Analysis-Birth location alone; and (2) by Cluster-Analysis-Birth location across all included lineages.^{vi} Only those values of 100 births or more, in a single county for a single lineage, are used for the analysis. Annex 2 is a summary spreadsheet with the main results of the analysis. Section 2 of this document discusses these results.

Annex 4: Location values used for analysis of birth locations

To produce a meaningful analysis by location, it was necessary to classify records by location using a consistent set of location values. The following location values were used for this classification:

England - Bedfordshire
England - Berkshire
England - Buckinghamshire
England - Cambridgeshire
England - Cheshire
England - Cornwall
England - Cumberland (note: became part of Cumbria in 1974)
England - Cumbria
England - Derbyshire
England - Devon
England - Devonshire
England - Dorset
England - Durham
England - Essex
England - Gloucestershire
England - Hampshire
England - Hertfordshire
England - Jersey
England - Kent
England - Lancashire
England - Leicestershire
England - Lincolnshire
England - Liverpool (note: Merseyside starting in 1974)
England - London
England - Manchester
England - Middlesex (note: no longer a county starting in 1974, but rather mostly in London)
England - Newcastle (note: in Tyne and Wear starting in 1974)
England - Norfolk
England - Northamptonshire
England - Northumberland
England - Nottinghamshire
England - Oxfordshire
England - Shropshire
England - Somerset
England - Staffordshire
England - Suffolk
England - Surrey
England - Sussex
England - Warwickshire
England - Westmorland (note: became part of Cumbria in 1974)
England - Wiltshire
England - Worcestershire
England - Yorkshire
Ireland
Northern Ireland
Scotland

- United Kingdom - Unknown
- Wales
- World - Australia
- World - Australia
- World - Belgium
- World - Canada
- World - France
- World - New Zealand
- World - Other
- World - USA

Figure 2 shows the counties as defined in 1974.



Figure 2: English Counties as of 1974

Some major issues needed to be addressed during this classification process. While some incorrect classifications probably resulted, their quantity should not have been so significant that they would invalidate the overall results of the analysis.

- **Changing definitions of counties and of county boundaries.** The names of the counties and their boundaries have changed over time, with the result that a single location over time could be recorded as being in different counties, and the name of the same county could also have changed. For the purpose of classification, it was attempted to classify the same locations in a consistent way, rather than using the sometimes inconsistent original classifications. See the Wikipedia article on the list of counties of the United Kingdom and England.^{vii}
- **Inadequate location information in source data.** Because the source data for the Person Database used for this exercise was different lineages, mostly from the internet, the quality of the data was inconsistent, and it was not the objective of that collection and consolidation to clean all data, including location data. As a result, many birth locations give incomplete information, e.g., without country or county, so that it is impossible to determine at face value which county they are in, or which location from multiple possible locations is the correct one. For example, there are locations cited in the source data such as Croyden, Darlington, Davenport, Edmonton, Liverpool, Manchester, Newark, Oldham, Reading, and Scarborough. These have Becketts living in more than one of the named locations. Frequently there are also clear misspellings of location names.

Annex 5: Surnames in analysis

We needed to exclude many individuals from the analysis based on their surnames. In particular:

- **Spouses.** We excluded all spouse names, because there was no assurance that a spouse would have been born in the same location as the Beckett (etc) partner. Likewise, we did not analyze marriage locations because these would often be the location where the female spouse lived, who may not have been a Beckett (etc).
- **Similar surnames.** Erny's database includes many surnames which have been collected because they might possibly be variants of the Beckett surname. However, for this analysis, only surnames which were recognized close variants were included.

Annex 6: Lineages in analysis

We needed to exclude lineages which we considered unlikely to be Norman Beckett ones. In particular:

- **Ayrshire lineages.** Those lineages which we knew to be part of the Ayrshire Bicket(t)/Becket(t)/Bichan tree were excluded, as well as a few lineages which were considered likely to be Ayrshire lineages, but not yet proven.
- **Black Becketts.** Although some of these lineages might be genetically linked, others might not be, so to be conservative all were excluded.

Change log

21 03 2026	- Initial draft
	-

References

ⁱ See the latest version of the 'Branch Classifications' document on <https://bicket.one-name.blog/wp/other-resources-2>

ⁱⁱ See the latest version of the 'Origin of the Norman Beckett Surname' document on <https://bicket.one-name.blog/wp/origins-of-becket-beckett-bicket-bickett-bichan-surnames>

ⁱⁱⁱ See links to the latest versions of the Branch Index and the Person Index on <https://bicket.one-name.blog/wp/beckett-bickett-lineages-project-resources>.

^{iv} <https://bicket.one-name.blog/wp/norman-beckett-clusters-analysis>.

^v See links to the latest version of the Person Index on <https://bicket.one-name.blog/wp/beckett-bickett-lineages-project-resources>.

^{vi} <https://bicket.one-name.blog/wp/norman-beckett-clusters-analysis>

^{vii} https://en.wikipedia.org/wiki/List_of_counties_of_the_United_Kingdom#England. Accessed on 12 March 2026.